

MyTcoat

— Commercial Outdoor Furniture —





— Commercial Outdoor Furniture —

Welcome to the next evolution of commercial outdoor furniture!

MyTCoat is an esteemed American outdoor furniture manufacturer located in Whitney, Texas. We produce high-quality picnic tables, park benches, trash receptacles, and other outdoor furnishings. Our company takes pride in being family-owned and operated, with a state-of-the-art manufacturing facility that allows it to offer timely delivery, competitive prices, and top-notch products.

At MyTCoat, we recognize that customer care is crucial for building lasting relationships. Our dedication to quality and customer satisfaction has established a loyal customer base nationwide. If you seek a dependable, customer-focused outdoor furniture manufacturer, look no further than MyTCoat.

The company's ownership is comprised of Robert Webb, Rodney Webb, and Troy Stephens, who have 60 years of combined experience in the outdoor furniture manufacturing industry. MyTCoat has been built on our commitment to customer satisfaction. We have developed a "Three R Company" philosophy that focuses on delivering the Right Products, the Right Delivery, and the Right Price.

Right Products:

Our company takes great pride in delivering top-quality products that are made in America, built to last, and always dependable. We offer an extensive range of coating and color options that is unmatched in the market that consists of 12 standard industrial coating colors, 6 textured coating colors, and our exclusive Advantage coating with 13 colors. Our skilled family of American workers manufacture each product to ensure it can withstand even the harshest

conditions in various settings and climates, from family backyards to schools, sports complexes, and beyond.

Our products are a testament to our quality, as shown by their presence in city parks, campgrounds, and recreation sites worldwide. We invite you to explore our products and experience the quality of our craftsmanship firsthand.

Right Delivery:

Our company is fully committed to providing our customers with the fastest lead times in the industry. We understand that our customers' time is extremely valuable, and we have consistently proven that we deliver on our commitment.

Right Price:

As a company, we are vigilant in monitoring market trends and engaging with industry leaders to offer the most competitive pricing in our industry. Although we acknowledge that cheaply made products have entered the market, we maintain a commitment to producing high quality, American made products at the most competitive price.

As a "Three R Company," we are dedicated to cultivating strong and successful relationships with our valued customers; we are excited to expand the MyTCoat family and we look forward to the opportunity of growing together. Robert, Rodney, Troy and the MyTCoat family invite you to contact us for any inquiries. Our team of experts is ready and available to assist you with your site amenities needs. Visit us at our website, www.mytcoat.com, for more information.

MyTCoat's CORE Values

Keep Employees
Happy

Keep Customers
Happy

Keep Vendors
Happy

MyTCoAT Advantage

- ▶ Proprietary Coating
- ▶ Won't Chip, Crack, or Peel
- ▶ 7-Year Warranty
- ▶ 13 Available Colors

MyTCoat's Advantage Coating is our proprietary coating unique only to MyTCoat. This state-of-the-art coating will not chip, crack or peel. It doesn't have any drips or runs, and it is the most durable coating on the market. The Advantage coating comes with a 7-year Warranty and is available in 13 Different Colors.



MyTCoAT Industry Standard

- ▶ Premium Polyethylene Coating
- ▶ Best Price in the Industry
- ▶ 5-Year Warranty
- ▶ 12 Available Colors

When prices are the main factor that will drive your sales, then look to the Industry Standard line. This coating has been proven to withstand the elements at an affordable price. We have the most color options available with a 5-year warranty. 12 colors are available.



MyTCoAT Textured

- ▶ Premium Textured
- ▶ Best Price in the Industry
- ▶ 7-Year Warranty
- ▶ 6 Available Colors

Looking for a new spin on a reliable classic? We added texture to our Premium Polyethylene Coating for a more scratch and mar resistance with a little added style. 7-year warranty. 6 new colors available.



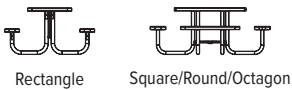
Notes about colors:

Colors may vary between different coatings.

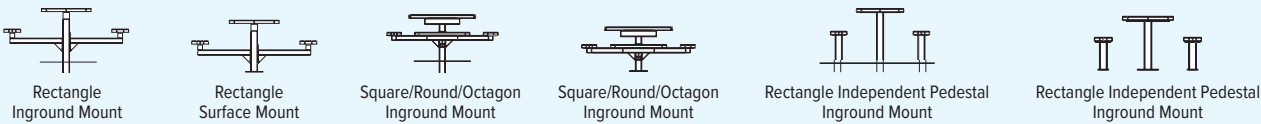
Frame Colors: Powder coated frames can be ordered to match the tops and seat color, if the color is not specified on the order, black will be entered into the order processing system.

Frame Styles

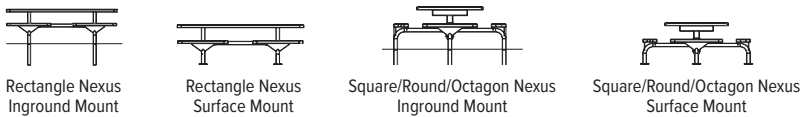
Portable Table Frames



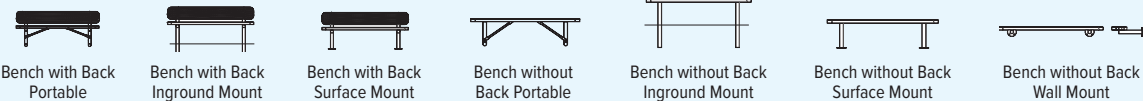
Pedestal Table Frames



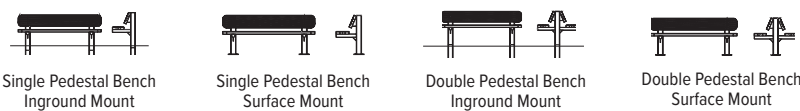
Nexus Table Frames



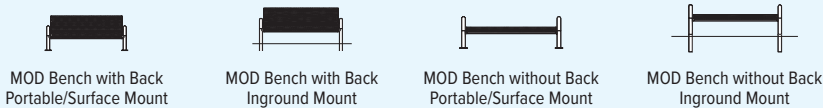
Bench Frames



Pedestal Bench Frames



Modern Bench Frames



Contoured Bench Frames



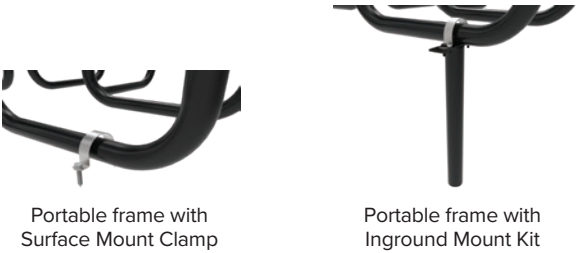
Strap Bench Frames



Austin Bench Frames



Surface Mounting & Covers



One of the easiest and fastest ways to convert a portable style table to either inground mount or surface mount, is to use our surface mount clamp or inground mount kit for portable tables.



MyTCoat Provides Surface Mount Covers for a variety of our Benches and Bike Racks. The covers come in two sections and screw together for easy installation after the product has been installed.

Hardware & Common Materials

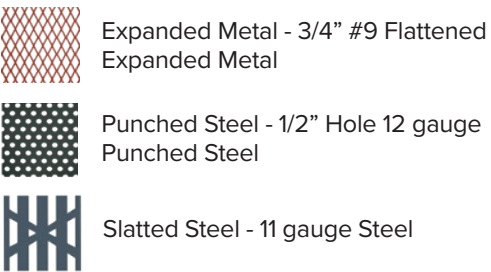
Hardware

- ▶ Corrosion Resistant
- ▶ Chemical Resistant
- ▶ Weathering Resistant

MyTCoat uses Xylan coated hardware that offers the best quality to match our products. Benefits of Xylan Coating are:

- Corrosion and Chemical Resistance
- Weather Resistance – sunlight and salt water
- Wear resistant, even under extreme pressure
- Wider temperature range

Common Material Description



Frames are designed with Galvanized tubing. All Cast Frames are made of Cast Aluminum.





Round Portable Picnic Table | TRD46-D-04-000 | See page 11 for details

Table of Contents



8	Rectangular Portable Picnic Tables	34	Benches with Back
10	Round Portable Picnic Tables	36	Players Benches with Back
12	Square Portable Picnic Tables	37	Players Benches without Back
14	Octagon Portable Picnic Tables	38	Rolled Benches with Back
15	Octagon Portable Picnic Tables with Rolled Seats	39	Rolled Benches without Back
16	Round Portable Tables with Solid Tops	40	Single Pedestal Benches with Back
17	Patio Tables	41	Double Pedestal Benches with Back
18	Rectangular Single Pedestal Tables	42	MOD Benches with Back
19	Rectangular Double Pedestal Tables	43	MOD Benches without Back
20	Square Pedestal Picnic Tables	44	Contoured Benches
21	Round Pedestal Picnic Tables	45	Austin Benches
22	Octagon Pedestal Picnic Tables	46	Downtown / Skyline / Village Benches
23	Octagon Pedestal Tables Picnic with Rolled Seats	48	Custom
24	Round Pedestal Picnic Tables with Solid Tops	50	Game Tables
25	Rectangular Independent Pedestal Tables	51	Park Grill
26	Rectangular Nexus Pedestal Tables	52	Trash Receptacles
27	Square Nexus Pedestal Tables	55	Trash Receptacles Accessories
28	Round Nexus Pedestal Tables	56	Ashurns
29	Octagon Nexus Pedestal Table	58	Bike Racks
30	Octagon Nexus Pedestal Tables with Rolled Seats	60	Dog Park Kits
31	Round Nexus Pedestal Tables with Solid Tops	63	Dog Park Accessories
32	Utility Tables	66	Warranty Information
33	Umbrellas		



Austin Bench | BAU06-W-64-000 | See page 45 for details

Rectangular Portable Picnic Tables



Available Materials:  Expanded Metal  Punched Steel

*Elementary Sizes are available

If you are looking for tables designed for the kids, look no further than our Elementary and Preschool options. We have designed our portable tables with height options for children of all ages.

Kids:
Top – 24” height
Seats – 12” height

Pre-School:
Top – 18” height
Seat – 9” height



Rectangular Portable Table

Model Shown: TRT06-A-01-000
Available Sizes: 4ft, 6ft, 8ft, and 10ft
Top and Seat Material: 3/4” #9 Flattened Expanded Metal
Frame Material: 2 3/8” Galvanized Tubing with Powder Coat Finish
Options: Advantage, Industry Standard, or Textured Coatings



Rectangular Portable Table - ADA Accessible

Model Shown: TRT08-A-01-001
Available Sizes: 8ft (6ft seats) - Accessible on one end.
Top and Seat Material: 3/4” #9 Flattened Expanded Metal
Frame Material: 2 3/8” Galvanized Tubing with Powder Coat Finish
Options: Advantage, Industry Standard, or Textured Coatings



Rectangular Portable Table - Alternate ADA Accessible

Model Shown: TRT08-B-01-002
Available Sizes: 8ft (6ft seats) - Accessible on both ends
Top and Seat Material: 1/2” Hole Punched Steel
Frame Material: 2 3/8” Galvanized Tubing with Powder Coat Finish
Options: Advantage, Industry Standard, or Textured Coatings



Rectangular Portable Table

Model Shown: TRT10-A-01-000
Available Sizes: 10ft
Top and Seat Material: 3/4” #9 Flattened Expanded Metal
Frame Material: 2 3/8” Galvanized Tubing with Powder Coat Finish
Options: Advantage, Industry Standard, or Textured Coatings

*Umbrella Hole and Brace can be added to Portable Rectangular Tables for additional costs.

Round Portable Picnic Tables



Round Portable Picnic Table | TRD46-D-04-000 | See page 11 for details

Round Portable Picnic Tables



Available Materials: Expanded Metal Punched Steel

*Elementary Sizes are available



Round Portable Picnic Table

Model Shown: TRD46-B-04-000
Available Sizes: 46" Round Top
Top and Seat Material: 1/2" Hole Punched Steel
Frame Material: 2" Galvanized Tubing with Powder Coat Finish
Options: Advantage, Industry Standard, or Textured Coatings



Round Portable Picnic Table - 3 Seat

Model Shown: TRD46-A-04-013
Available Sizes: 46" Round Top
Top and Seat Material: 3/4" #9 Flattened Expanded Metal
Frame Material: 2" Galvanized Tubing with Powder Coat Finish
Options: Advantage, Industry Standard, or Textured Coatings



Round Portable Picnic Table - 2 Seat

Model Shown: TRD46-A-04-012
Available Sizes: 46" Round Top
Top and Seat Material: 3/4" #9 Flattened Expanded Metal
Frame Material: 2" Galvanized Tubing with Powder Coat Finish
Options: Advantage, Industry Standard, or Textured Coatings

Square Portable Picnic Tables



Square Portable Picnic Table | TSQ46-D-04-000 | See page 13 for details

Square Portable Picnic Tables



Available Materials: Expanded Metal Punched Steel

*Elementary Sizes are available



Square Portable Picnic Table

Model Shown: TSQ46-A-04-000
Available Sizes: 46" Square Top
Top and Seat Material: 3/4" #9 Flattened Expanded Metal
Frame Material: 2" Galvanized Tubing with Powder Coat Finish
Options: Advantage, Industry Standard, or Textured Coatings



Square Portable Picnic Table - ADA 3 Seat

Model Shown: TSQ46-B-04-013
Available Sizes: 46" x 54" Rectangle Top
Top and Seat Material: 1/2" #9 Hole Punched Steel
Frame Material: 2" Galvanized Tubing with Powder Coat Finish
Options: Advantage, Industry Standard, or Textured Coatings



Square Portable Picnic Table - ADA 2 Seat

Model Shown: TSQ46-A-04-012
Available Sizes: 46" x 62" Rectangle Top
Top and Seat Material: 3/4" #9 Flat Expanded Steel
Frame Material: 2" Galvanized Tubing with Powder Coat Finish
Options: Advantage, Industry Standard, or Textured Coating

Octagon Portable Picnic Tables



Available Materials: Expanded Metal Punched Steel

*Elementary Sizes are available



Octagon Portable Picnic Table

Model Shown: TOT46-A-04-000
Available Sizes: 46" Octagon Top
Top and Seat Material: 3/4" #9 Flattened Expanded Metal
Frame Material: 2" Galvanized Tubing with Powder Coat Finish
Options: Advantage, Industry Standard, or Textured Coatings



Octagon Portable Picnic Table - ADA 3 Seat

Model Shown: TOT46-B-04-013
Available Sizes: 46" x 54" Octagon Top
Top and Seat Material: 1/2" Hole Punched Steel
Frame Material: 2" Galvanized Tubing with Powder Coat Finish
Options: Advantage, Industry Standard, or Textured Coatings



Octagon Portable Picnic Table - ADA 2 Seat

Model Shown: TOT46-B-04-012
Available Sizes: 46" x 62" Octagon Top
Top and Seat Material: 1/2" Hole Punched Steel
Frame Material: 2" Galvanized Tubing with Powder Coat Finish
Options: Advantage, Industry Standard, or Textured Coatings

Octagon Portable Picnic Tables with Rolled Seats



Available Materials: Expanded Metal Punched Steel

*Elementary Sizes are available



Octagon Portable Picnic Table with Rolled Seats

Model Shown: TOR46-A-04-000
Available Sizes: 46" Octagon Top
Top and Seat Material: 3/4" #9 Flattened Expanded Metal
Frame Material: 2" Galvanized Tubing with Powder Coat Finish
Options: Advantage Coating or Industry Standard Coating



Octagon Portable Picnic Table with Rolled Seats - ADA 3 Seat

Model Shown: TOR46-B-04-013
Available Sizes: 46" x 54" Octagon Top
Top and Seat Material: 1/2" Hole Punched Steel
Frame Material: 2" Galvanized Tubing with Powder Coat Finish
Options: Advantage, Industry Standard, or Textured Coatings



Octagon Portable Picnic Table with Rolled Seats - ADA 2 Seat

Model Shown: TOR46-B-04-012
Available Sizes: 46" x 62" Octagon Top
Top and Seat Material: 1/2" Hole Punched Steel
Frame Material: 2" Galvanized Tubing with Powder Coat Finish
Options: Advantage, Industry Standard, or Textured Coatings

Round Portable Picnic Tables with Solid Top



Available Materials: Expanded Metal Punched Steel

*Elementary Sizes are available

Patio Tables



*Product Shown with Stacking Chair - Sold Separately



Round Portable Picnic Table with Solid Top

Model Shown: TRS46-B-04-000
Available Sizes: 46" Round Top
Top Material: 11 gauge Spun Metal
Seat Material: 1/2" Hole Punched Steel
Frame Material: 2" Galvanized Tubing with Powder Coat Finish
Options: • Advantage, Industry Standard, or Textured Coatings



Round Patio with Round Seats

Model Shown: TRD36-A-65-000
Available Sizes: 36" Round Top with 16" Round Seats
Top and Seat Material: 3/4" #9 Flattened Expanded Metal
Frame Material: 2" Galvanized Tubing with Powder Coat Finish
Options: Advantage Coating or Industry Standard Coating



Round Portable Picnic Table with Solid Top - 3 Seat

Model Shown: TRS46-B-04-003
Available Sizes: 46" Round Top
Top Material: 11 gauge Spun Metal
Seat Material: 1/2" Hole Punched Steel
Frame Material: 2" Galvanized Tubing with Powder Coat Finish
Options: • Advantage, Industry Standard, or Textured Coatings



Round Portable Picnic Table with Solid Top - 2 Seat

Model Shown: TRS46-A-04-002
Available Sizes: 46" Round Top
Top Material: 11 gauge Spun Metal
Seat Material: 3/4" #9 Flattened Expanded Metal
Frame Material: 2" Galvanized Tubing with Powder Coat Finish
Options: • Advantage, Industry Standard, or Textured Coatings



Square Patio Table - No attached Seats

Model Shown: TPS46-A-66-000
Available Sizes: 46" Square Top
Top & Seat Material: 3/4" #9 Flattened Expanded Metal
Frame Material: 2" Galvanized Tubing with Powder Coat Finish
Options: • Advantage, Industry Standard, or Textured Coatings

*Product Shown with Stacking Chair - Sold Separately



Round Patio Table - No attached Seats

Model Shown: TPR46-B-66-000
Available Sizes: 46" Round Top
Top & Seat Material: 1/2" Hole Punched Steel
Frame Material: 2" Galvanized Tubing with Powder Coat Finish
Options: • Advantage, Industry Standard, or Textured Coatings

*Product Shown with Stacking Chair - Sold Separately



Stacking Chair

Model Shown: CSK02-A-67-000
Available Sizes: 22" Wide
Top & Seat Material: 3/4" #9 Flattened Expanded Metal
Frame Material: 1" Galvanized Tubing with Powder Coat Finish
Options: • Advantage, Industry Standard, or Textured Coatings

Rectangular Single Pedestal Tables



Available Materials: Expanded Metal Punched Steel

MyTCoat's Pedestal Tables are made with the same Tops and Seats as our portable style, but with a Heavy Duty 4" x 4" Frame with bolt on 3" arms for ease of shipping and assembly.



Rectangular Single Pedestal Table

Model Shown: TRT06-A-06-000
Available Sizes: 6ft
Top and Seat Material: 3/4" #9 Flattened Expanded Metal
Frame Material: 4" Square Tubing Center Post, 3" Square Tubing Arms, Galvanized Tubing with Powder Coat Finish
Options: Advantage, Industry Standard, or Textured Coatings
Inground Mount or Surface Mount



Rectangular Single Pedestal Table

Model Shown: TRT06-B-07-000
Available Sizes: 6ft
Top and Seat Material: 1/2" Hole Punched Steel
Frame Material: 4" Square Tubing Center Post, 3" Square Tubing Arms, Galvanized Tubing with Powder Coat Finish
Options: Advantage, Industry Standard, or Textured Coatings
Inground Mount or Surface Mount

Rectangular Double Pedestal Tables



Available Materials: Expanded Metal Punched Steel



Rectangular Double Pedestal Table

Model Shown: TRT08-B-09-000
Available Sizes: 6ft and 8ft
Top and Seat Material: 1/2" Hole Punched Steel
Frame Material: 4" Square Tubing Center Post, 3" Square Tubing Arms, Galvanized Tubing with Powder Coat Finish
Options: Advantage, Industry Standard, or Textured Coatings
Inground Mount or Surface Mount



Rectangular Double Pedestal Table - ADA Accessible

Model Shown: TRT08-A-08-001
Available Sizes: 8ft (6ft seats) - Accessible on one end.
Top and Seat Material: 3/4" #9 Flattened Expanded Metal
Frame Material: 4" Square Tubing Center Post, 3" Square Tubing Arms, Galvanized Tubing with Powder Coat Finish
Options: Advantage, Industry Standard, or Textured Coatings
Inground Mount or Surface Mount



Rectangular Double Pedestal Table - Alternate ADA Accessible

Model Shown: TRT08-A-09-002
Available Sizes: 8ft (6ft seats) - Accessible on both ends.
Top and Seat Material: 3/4" #9 Flattened Expanded Metal
Frame Material: 4" Square Tubing Center Post, 3" Square Tubing Arms, Galvanized Tubing with Powder Coat Finish
Options: Advantage, Industry Standard, or Textured Coatings
Inground Mount or Surface Mount

Square Pedestal Picnic Tables



Available Materials: Expanded Metal Punched Steel



Square Pedestal Picnic Table

Model Shown: TSQ46-B-13-000
Available Sizes: 46" Square Top
Top and Seat Material: 1/2" Hole Punched Steel
Frame Material: 4" Square Tubing Center Post, 3" Square Tubing Arms, Galvanized Tubing with Powder Coat Finish
Options: Advantage, Industry Standard, or Textured Coatings
Inground Mount or Surface Mount



Square Pedestal Picnic Table - ADA 3 Seat

Model Shown: TSQ46-A-15-013
Available Sizes: 46" x 54" Rectangle Top
Top and Seat Material: 3/4" #9 Flattened Expanded Metal
Frame Material: 4" Square Tubing Center Post, 3" Square Tubing Arms, Galvanized Tubing with Powder Coat Finish
Options: Advantage, Industry Standard, or Textured Coatings
Inground Mount or Surface Mount



Square Pedestal Picnic Table - ADA 2 Seat

Model Shown: TSQ46-A-16-012
Available Sizes: 46" x 62" Rectangle Top
Top and Seat Material: 3/4" #9 Flattened Expanded Metal
Frame Material: 4" Square Tubing Center Post, 3" Square Tubing Arms, Galvanized Tubing with Powder Coat Finish
Options: Advantage, Industry Standard, or Textured Coatings
Inground Mount or Surface Mount

Round Pedestal Picnic Tables



Available Materials: Expanded Metal Punched Steel



Round Pedestal Picnic Table

Model Shown: TRD46-A-13-000
Available Sizes: 46" Round Top
Top and Seat Material: 3/4" #9 Flattened Expanded Metal
Frame Material: 4" Square Tubing Center Post, 3" Square Tubing Arms, Galvanized Tubing with Powder Coat Finish
Options: Advantage, Industry Standard, or Textured Coatings
Inground Mount or Surface Mount



Round Pedestal Picnic Table - 3 Seat

Model Shown: TRD46-A-15-003
Available Sizes: 46" Round Top
Top and Seat Material: 3/4" #9 Flattened Expanded Metal
Frame Material: 4" Square Tubing Center Post, 3" Square Tubing Arms, Galvanized Tubing with Powder Coat Finish
Options: Advantage, Industry Standard, or Textured Coatings
Inground Mount or Surface Mount





Round Pedestal Picnic Table - 2 Seat

Model Shown: TRD46-A-15-003
Available Sizes: 46" Round Top
Top and Seat Material: 3/4" #9 Flattened Expanded Metal
Frame Material: 4" Square Tubing Center Post, 3" Square Tubing Arms, Galvanized Tubing with Powder Coat Finish
Options: Advantage, Industry Standard, or Textured Coatings
Inground Mount or Surface Mount

Octagon Pedestal Picnic Tables



Available Materials:  Expanded Metal  Punched Steel



Octagon Pedestal Picnic Table

Model Shown: TOT46-B-13-000
Available Sizes: 46" Octagon Top
Top and Seat Material: 1/2" Hole Punched Steel
Frame Material: 4" Square Tubing Center Post, 3" Square Tubing Arms, Galvanized Tubing with Powder Coat Finish
Options:

- Advantage, Industry Standard, or Textured Coatings
- Inground Mount or Surface Mount



Square Pedestal Picnic Table - ADA 3 Seat

Model Shown: TOT46-B-15-013
Available Sizes: 46" x 54" Octagon Top
Top and Seat Material: 1/2" Hole Punched Steel
Frame Material: 4" Square Tubing Center Post, 3" Square Tubing Arms, Galvanized Tubing with Powder Coat Finish
Options:

- Advantage, Industry Standard, or Textured Coatings
- Inground Mount or Surface Mount





Square Pedestal Picnic Table - ADA 2 Seat

Model Shown: TOT46-A-16-012
Available Sizes: 46" x 62" Octagon Top
Top and Seat Material: 3/4" #9 Flattened Expanded Metal
Frame Material: 4" Square Tubing Center Post, 3" Square Tubing Arms, Galvanized Tubing with Powder Coat Finish
Options:

- Advantage, Industry Standard, or Textured Coatings
- Inground Mount or Surface Mount

Octagon Pedestal Picnic Tables with Rolled Seats



Available Materials:  Expanded Metal  Punched Steel



Octagon Pedestal Picnic Table with Rolled Seats

Model Shown: TOR46-B-13-000
Available Sizes: 46" Octagon Top
Top and Seat Material: 1/2" Hole Punched Steel
Frame Material: 4" Square Tubing Center Post, 3" Square Tubing Arms, Galvanized Tubing with Powder Coat Finish
Options:

- Advantage, Industry Standard, or Textured Coatings
- Inground Mount or Surface Mount



Octagon Pedestal Picnic Table with Rolled Seats - ADA 3 Seat

Model Shown: TOR46-B-15-013
Available Sizes: 46" x 54" Octagon Top
Top and Seat Material: 1/2" Hole Punched Steel
Frame Material: 4" Square Tubing Center Post, 3" Square Tubing Arms, Galvanized Tubing with Powder Coat Finish
Options:

- Advantage, Industry Standard, or Textured Coatings
- Inground Mount or Surface Mount



Octagon Pedestal Picnic Table with Rolled Seats - ADA 2 Seat

Model Shown: TOR46-A-16-012
Available Sizes: 46" x 62" Octagon Top
Top and Seat Material: 3/4" #9 Flattened Expanded Metal
Frame Material: 4" Square Tubing Center Post, 3" Square Tubing Arms, Galvanized Tubing with Powder Coat Finish
Options:

- Advantage, Industry Standard, or Textured Coatings
- Inground Mount or Surface Mount

Round Pedestal Picnic Tables with Solid Top



Available Materials: Expanded Metal Punched Steel

Rectangular Independent Pedestal Tables



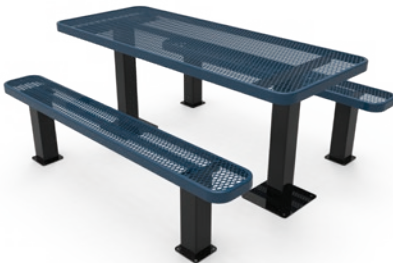
Available Materials: Expanded Metal Punched Steel

Round Pedestal Picnic Table with Solid Top



Model Shown: TRS46-A-13-000
Available Sizes: 46" Round Top
Top Material: 11 gauge Spun Metal
Seat Material: 3/4" #9 Flattened Expanded Metal
Frame Material: 4" Square Tubing Center Post, 3" Square Tubing Arms, Galvanized Tubing with Powder Coat Finish
Options: Advantage, Industry Standard, or Textured Coatings
Inground Mount or Surface Mount

Rectangular Independent Pedestal Table



Model Shown: TRT06-A-11-000
Available Sizes: 6ft and 8ft
Top and Seat Material: 3/4" #9 Flattened Expanded Metal
Frame Material: 4" Square Tubing Post, Galvanized Tubing with Powder Coat Finish
Options: Advantage, Industry Standard, or Textured Coatings
Inground Mount or Surface Mount

Round Pedestal Picnic Table with Solid Top - 3 Seat



Model Shown: TRS46-B-14-003
Available Sizes: 46" Round Top
Top Material: 11 gauge Spun Metal
Seat Material: 1/2" Hole Punched Steel
Frame Material: 4" Square Tubing Center Post, 3" Square Tubing Arms, Galvanized Tubing with Powder Coat Finish
Options: Advantage, Industry Standard, or Textured Coatings
Inground Mount or Surface Mount

Round Pedestal Picnic Table with Solid Top - 2 Seat



Model Shown: TRS46-A-17-002
Available Sizes: 46" Round Top
Top Material: 11 gauge Spun Metal
Seat Material: 3/4" #9 Flattened Expanded Metal
Frame Material: 4" Square Tubing Center Post, 3" Square Tubing Arms, Galvanized Tubing with Powder Coat Finish
Options: Advantage, Industry Standard, or Textured Coatings
Inground Mount or Surface Mount

Rectangular Independent Pedestal Table - ADA Accessible



Model Shown: TRT08-B-11-001
Available Sizes: 8ft (6ft seats) - Accessible on one end.
Top and Seat Material: 1/2" Hole Punched Steel
Frame Material: 4" Square Tubing Post, Galvanized Tubing with Powder Coat Finish
Options: Advantage, Industry Standard, or Textured Coatings
Inground Mount or Surface Mount

Rectangular Independent Pedestal Table - Alternate ADA Accessible



Model Shown: TRT08-A-10-002
Available Sizes: 8ft (6ft seats) - Accessible on both ends.
Top and Seat Material: 3/4" #9 Flattened Expanded Metal
Frame Material: 4" Square Tubing Post, Galvanized Tubing with Powder Coat Finish
Options: Advantage, Industry Standard, or Textured Coatings
Inground Mount or Surface Mount

Rectangular Nexus Pedestal Tables



Available Materials: Expanded Metal Punched Steel

Square Nexus Pedestal Tables



Available Materials: Expanded Metal Punched Steel



Rectangular Nexus Pedestal Table

Model Shown: TRT08-B-64-000
Available Sizes: 8ft
Top and Seat Material: 1/2" Hole Punched Steel
Frame Material: 2 3/8" Round Nexus Frame, Galvanized Tubing with Powder Coat Finish
Options: Advantage, Industry Standard, or Textured Coatings
Inground Mount or Surface Mount



Square Nexus Pedestal Table

Model Shown: TSQ46-B-48-000
Available Sizes: 46" Square Top
Top and Seat Material: 1/2" Hole Punched Steel
Frame Material: 2 3/8" Round Nexus Frame with a 4" center post, Galvanized Tubing with Powder Coat Finish
Options: Advantage, Industry Standard, or Textured Coatings
Inground Mount or Surface Mount



Rectangular Nexus Pedestal Table

Model Shown: TRT08-A-63-000
Available Sizes: 8ft
Top and Seat Material: 3/4" #9 Flattened Expanded Metal
Frame Material: 2 3/8" Round Nexus Frame, Galvanized Tubing with Powder Coat Finish
Options: Advantage, Industry Standard, or Textured Coatings
Inground Mount or Surface Mount



Square Nexus Pedestal Table - ADA 3 Seat

Model Shown: TSQ46-A-50-013
Available Sizes: 46" x 54" Rectangle Top
Top and Seat Material: 3/4" #9 Flattened Expanded Metal
Frame Material: 2 3/8" Round Nexus Frame with a 4" center post, Galvanized Tubing with Powder Coat Finish
Options: Advantage, Industry Standard, or Textured Coatings
Inground Mount or Surface Mount





Square Nexus Pedestal Table - ADA 2 Seat

Model Shown: TSQ46-A-51-012
Available Sizes: 46" x 62" Rectangle Top
Top and Seat Material: 3/4" #9 Flattened Expanded Metal
Frame Material: 2 3/8" Round Nexus Frame with a 4" center post, Galvanized Tubing with Powder Coat Finish
Options: Advantage, Industry Standard, or Textured Coatings
Inground Mount or Surface Mount

Round Nexus Pedestal Tables



Available Materials:  Expanded Metal  Punched Steel



Round Nexus Pedestal Table

Model Shown: TRD46-A-48-000
Available Sizes: 46" Round Top
Top and Seat Material: 3/4" #9 Flattened Expanded Metal
Frame Material: 2 3/8" Round Nexus Frame with a 4" center post, Galvanized Tubing with Powder Coat Finish
Options:

- Advantage, Industry Standard, or Textured Coatings
- Inground Mount or Surface Mount



Round Nexus Pedestal Table - 3 Seat

Model Shown: TRD46-B-49-013
Available Sizes: 46" Round Top
Top and Seat Material: 1/2" Hole Punched Steel
Frame Material: 2 3/8" Round Nexus Frame with a 4" center post, Galvanized Tubing with Powder Coat Finish
Options:

- Advantage, Industry Standard, or Textured Coatings
- Inground Mount or Surface Mount





Round Nexus Pedestal Table - 2 Seat

Model Shown: TRD46-A-52-012
Available Sizes: 46" Round Top
Top and Seat Material: 3/4" #9 Flattened Expanded Metal
Frame Material: 2 3/8" Round Nexus Frame with a 4" center post, Galvanized Tubing with Powder Coat Finish
Options:

- Advantage, Industry Standard, or Textured Coatings
- Inground Mount or Surface Mount

Octagon Nexus Pedestal Tables



Available Materials:  Expanded Metal  Punched Steel



Octagon Nexus Pedestal Table

Model Shown: TOT46-A-47-000
Available Sizes: 46" Octagon Top
Top and Seat Material: 3/4" #9 Flattened Expanded Metal
Frame Material: 2 3/8" Round Nexus Frame with a 4" center post, Galvanized Tubing with Powder Coat Finish
Options:

- Advantage, Industry Standard, or Textured Coatings
- Inground Mount or Surface Mount



Octagon Nexus Pedestal Table - ADA 3 Seat

Model Shown: TOT46-A-15-013
Available Sizes: 46" x 54" Octagon Top
Top and Seat Material: 3/4" #9 Flattened Expanded Metal
Frame Material: 2 3/8" Round Nexus Frame with a 4" center post, Galvanized Tubing with Powder Coat Finish
Options:

- Advantage, Industry Standard, or Textured Coatings
- Inground Mount or Surface Mount



Octagon Nexus Pedestal Table - ADA 2 Seat

Model Shown: TOT46-B-16-012
Available Sizes: 46" x 62" Octagon Top
Top and Seat Material: 1/2" Hole Punched Steel
Frame Material: 2 3/8" Round Nexus Frame with a 4" center post, Galvanized Tubing with Powder Coat Finish
Options:

- Advantage, Industry Standard, or Textured Coatings
- Inground Mount or Surface Mount



Octagon Nexus Pedestal Tables With Rolled Seats

Available Materials: Expanded Metal Punched Steel



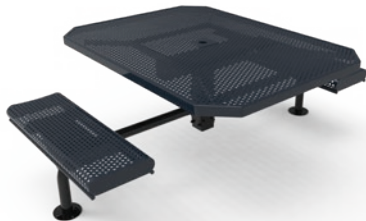
Octagon Nexus Pedestal Table with Rolled Seats

Model Shown: TOR46-A-47-000
Available Sizes: 46" Octagon Top
Top and Seat Material: 3/4" #9 Flattened Expanded Metal
Frame Material: 2 3/8" Round Nexus Frame with a 4" center post, Galvanized Tubing with Powder Coat Finish
Options: • Advantage, Industry Standard, or Textured Coatings
• Inground Mount or Surface Mount



Octagon Nexus Pedestal Table with Rolled Seats - ADA 3 Seat

Model Shown: TOR46-A-15-013
Available Sizes: 46" x 54" Octagon Top
Top and Seat Material: 3/4" #9 Flattened Expanded Metal
Frame Material: 2 3/8" Round Nexus Frame with a 4" center post, Galvanized Tubing with Powder Coat Finish
Options: • Advantage, Industry Standard, or Textured Coatings
• Inground Mount or Surface Mount



Octagon Nexus Pedestal Table with Rolled Seats - ADA 2 Seat

Model Shown: TOR46-B-17-012
Available Sizes: 46" x 62" Octagon Top
Top and Seat Material: 1/2" Hole Punched Steel
Frame Material: 2 3/8" Round Nexus Frame with a 4" center post, Galvanized Tubing with Powder Coat Finish
Options: • Advantage, Industry Standard, or Textured Coatings
• Inground Mount or Surface Mount



Round Nexus Pedestal Tables With Solid Top

Available Materials: Expanded Metal Punched Steel



Round Nexus Pedestal Table with Solid Top

Model Shown: TRS46-B-48-000
Available Sizes: 46" Round Top
Top Material: 11 gauge Spun Metal
Seat Material: 1/2" Hole Punched Steel
Frame Material: 2 3/8" Round Nexus Frame with a 4" center post, Galvanized Tubing with Powder Coat Finish
Options: • Advantage, Industry Standard, or Textured Coatings
• Inground Mount or Surface Mount



Round Nexus Pedestal Table with Solid Top - 3 Seat

Model Shown: TRS46-A-49-013
Available Sizes: 46" Round Top
Top Material: 11 gauge Spun Metal
Seat Material: 3/4" #9 Flattened Expanded Metal
Frame Material: 2 3/8" Round Nexus Frame with a 4" center post, Galvanized Tubing with Powder Coat Finish
Options: • Advantage, Industry Standard, or Textured Coatings
• Inground Mount or Surface Mount



Round Nexus Pedestal Table with Solid Top - 2 Seat

Model Shown: TRS46-A-52-012
Available Sizes: 46" Round Top
Top Material: 11 gauge Spun Metal
Seat Material: 3/4" #9 Flattened Expanded Metal
Frame Material: 2 3/8" Round Nexus Frame with a 4" center post, Galvanized Tubing with Powder Coat Finish
Options: • Advantage, Industry Standard, or Textured Coatings
• Inground Mount or Surface Mount

Utility Tables



Available Materials: Expanded Metal Punched Steel



Utility Table

Model Shown: TRT06-A-03-000
Available Sizes: 4Ft, 6Ft, and 8Ft - No Seats
Top and Seat Material: 3/4" #9 Flattened Expanded Metal
Frame Material: 2 3/8" Galvanized Tubing with Powder Coat Finish
Options: Advantage, Industry Standard, and Textured Coatings



Utility Table

Model Shown: TRT06-B-03-000
Available Sizes: 4Ft, 6Ft, and 8Ft - No Seats
Top and Seat Material: 1/2" Hole Punched Steel
Frame Material: 2 3/8" Galvanized Tubing with Powder Coat Finish
Options: Advantage, Industry Standard, and Textured Coatings

Umbrellas



Patio Style Umbrella

Model Shown: UMP75-0-00-000
Available Sizes: 7.5ft
Material: 9 oz. Marine Grade Acrylic Top, Pole, 8mm Fiberglass Ribs, Manual Lift, No Tilt, valance only
Pole Material: Aluminum



Market Style Umbrella

Model Shown: UMM75-0-00-000
Available Sizes: 7.5ft
Material: 8 Ribs, 9 oz. Marine Grade Acrylic Top, 1/2" Fiberglass Ribs, Pulley Lift, With Vent
Pole Material: 1/8" Thick Aluminum Pole

Umbrella Pole colors: Black, Bronze, White, and Silver.
Comes in Iodized or Matte finish.

Available Umbrella Colors

Umbrellas come in a wide variety of colors, please contact customer service for a full list of umbrella colors. Please note, umbrella color will vary from the color of the tables.

NBA Navy Blue	FGA Forest Green	ORA Orange	BJA Black	YSA Yellow Stripe
PBA Pacific Blue	BGA Burgundy	YLA Sunflower Yellow	CGA Cadet Gray	BSA Blue Stripe
CPA Capri	LRA Logo Red	BNA Brown	WHA White	TQSA Turquoise Stripe
TQA Turquoise	CRA Coral	TTA Toast	RSA Red Stripe	BKSA Black Stripe
PTA Pistachio	TRA Terracotta	LNA Linen	OSA Orange Stripe	



Bases



Concrete Filled Resin Base



Steel Base



U-Brace™

Model Shown: UBR15-S-00-000
Available Sizes: Fits 1.5" Umbrella Hole
Material: Aluminum with Stainless Steel Bolts



- Eliminates the need for a heavy umbrella base.
- Fits all 1.5" Umbrella Poles
- Increases safety and security
- Reduces expensive damage
- Zero Maintenance

Benches



Available Materials: Expanded Metal Punched Steel

*Elementary Sizes are available

- 4', 6', 8', 10', and 15' Sizes Available - 10.5" wide Seats
- 2 3/8" Galvanized Frames - Powder Coat Finish
- Portable, Inground, and Surface Mount
- Expanded Metal or Punched Steel
- Advantage, Industry Standard, and Textured Coatings.



Benches



Bench With Back

Model Shown: BRT06-A-18-000
Available Sizes: 4ft, 6ft, 8ft
Seat Material: 3/4" #9 Flattened Expanded Metal
Frame Material: 2 3/8" Galvanized Tubing with Powder Coat Finish
Options:

- Advantage, Industry Standard, and Textured Coatings
- Portable, Inground Mount, or Surface Mount



Bench With Back

Model Shown: BRT06-B-19-000
Available Sizes: 4ft, 6ft, 8ft
Seat Material: 1/2" Hole Punched Steel
Frame Material: 2 3/8" Galvanized Tubing with Powder Coat Finish
Options:

- Advantage, Industry Standard, and Textured Coatings
- Portable, Inground Mount, or Surface Mount



Bench With Back

Model Shown: BRT06-A-20-000
Available Sizes: 4ft, 6ft, 8ft
Seat Material: 3/4" #9 Flattened Expanded Metal
Frame Material: 2 3/8" Galvanized Tubing with Powder Coat Finish
Options:

- Advantage, Industry Standard, and Textured Coatings
- Portable, Inground Mount, or Surface Mount



Bench Without Back

Model Shown: BRT06-B-21-000
Available Sizes: 4ft, 6ft, 8ft
Seat Material: 1/2" Hole Punched Steel
Frame Material: 2 3/8" Galvanized Tubing with Powder Coat Finish
Options:

- Advantage, Industry Standard, and Textured Coatings
- Portable, Inground Mount, or Surface Mount



Bench Without Back

Model Shown: BRT06-A-22-000
Available Sizes: 4ft, 6ft, 8ft
Seat Material: 3/4" #9 Flattened Expanded Metal
Frame Material: 2 3/8" Galvanized Tubing with Powder Coat Finish
Options:

- Advantage, Industry Standard, and Textured Coatings
- Portable, Inground Mount, or Surface Mount



Bench Without Back

Model Shown: BRT06-B-23-000
Available Sizes: 4ft, 6ft, 8ft
Seat Material: 1/2" Hole Punched Steel
Frame Material: 2 3/8" Galvanized Tubing with Powder Coat Finish
Options:

- Advantage, Industry Standard, and Textured Coatings
- Portable, Inground Mount, or Surface Mount



Bench Without Back

Model Shown: BRT10-B-23-000
Available Sizes: 10ft or 15ft
Seat Material: 1/2" Hole Punched Steel
Frame Material: 2 3/8" Galvanized Tubing with Powder Coat Finish
Options:

- Advantage Coating or Industry Standard Coating
- Portable, Inground Mount, Surface Mount

Players Bench With Back



Available Materials: Expanded Metal Punched Steel

*Elementary Sizes are available

Players Bench Without Back



Available Materials: Expanded Metal Punched Steel

*Elementary Sizes are available



Players Bench With Back

Model Shown: BPY06-A-30-000
Available Sizes: 4ft, 6ft, 8ft – 15" wide Seat (10ft and 15ft options available)
Seat Material: 3/4" #9 Flattened Expanded Metal
Frame Material: 2 3/8" Galvanized Tubing with Powder Coat Finish
Options: • Advantage, Industry Standard, and Textured Coatings
• Portable, Inground Mount, or Surface Mount



Players Bench Without Back

Model Shown: BPY06-A-33-000
Available Sizes: 4ft, 6ft, 8ft – 15" wide Seat (10ft and 15ft options available)
Seat Material: 3/4" #9 Flattened Expanded Metal
Frame Material: 2 3/8" Galvanized Tubing with Powder Coat Finish
Options: • Advantage, Industry Standard, and Textured Coatings
• Portable, Inground Mount, or Surface Mount



Players Bench With Back

Model Shown: BPY06-B-31-000
Available Sizes: 4ft, 6ft, 8ft – 15" wide Seat (10ft and 15ft options available)
Seat Material: 1/2" Hole Punched Steel
Frame Material: 2 3/8" Galvanized Tubing with Powder Coat Finish
Options: • Advantage, Industry Standard, and Textured Coatings
• Portable, Inground Mount, or Surface Mount



Players Bench With Back

Model Shown: BPY06-A-32-000
Available Sizes: 4ft, 6ft, 8ft – 15" wide Seat (10ft and 15ft options available)
Seat Material: 3/4" #9 Flattened Expanded Metal
Frame Material: 2 3/8" Galvanized Tubing with Powder Coat Finish
Options: • Advantage, Industry Standard, and Textured Coatings
• Portable, Inground Mount, or Surface Mount



Players Bench Without Back

Model Shown: BPY06-B-35-000
Available Sizes: 4ft, 6ft, 8ft – 15" wide Seat (10ft and 15ft options available)
Seat Material: 1/2" Hole Punched Steel
Frame Material: 2 3/8" Galvanized Tubing with Powder Coat Finish
Options: • Advantage, Industry Standard, and Textured Coatings
• Portable, Inground Mount, or Surface Mount



Players Bench Without Back

Model Shown: BPY06-B-34-000
Available Sizes: 4ft, 6ft, 8ft – 15" wide Seat (10ft and 15ft options available)
Seat Material: 1/2" Hole Punched Steel
Frame Material: 2 3/8" Galvanized Tubing with Powder Coat Finish
Options: • Advantage, Industry Standard, and Textured Coatings
• Portable, Inground Mount, or Surface Mount



Rolled Bench With Back

Available Materials: Expanded Metal Punched Steel

*Elementary Sizes are available



Rolled Bench With Back

Model Shown: BRE06-B-18-000
Available Sizes: 4ft and 6ft
Seat Material: 1/2" Hole Punched Steel
Frame Material: 2 3/8" Galvanized Tubing with Powder Coat Finish
Options: Advantage, Industry Standard, and Textured Coatings
Portable, Inground Mount, or Surface Mount



Rolled Bench With Back

Model Shown: BRE06-A-19-000
Available Sizes: 4ft and 6ft
Seat Material: 3/4" #9 Flattened Expanded Metal
Frame Material: 2 3/8" Galvanized Tubing with Powder Coat Finish
Options: Advantage, Industry Standard, and Textured Coatings
Portable, Inground Mount, or Surface Mount



Rolled Bench With Back

Model Shown: BRE06-E-20-000
Available Sizes: 4ft and 6ft
Seat Material: Slatted Steel
Frame Material: 2 3/8" Galvanized Tubing with Powder Coat Finish
Options: Advantage, Industry Standard, and Textured Coatings
Portable, Inground Mount, or Surface Mount



Rolled Bench Without Back

Available Materials: Expanded Metal Punched Steel Slatted Steel

*Elementary Sizes are available



Rolled Bench Without Back

Model Shown: BRE06-B-22-000
Available Sizes: 4ft and 6ft
Seat Material: 1/2" Hole Punched Steel
Frame Material: 2 3/8" Galvanized Tubing with Powder Coat Finish
Options: Advantage, Industry Standard, and Textured Coatings
Portable, Inground Mount, or Surface Mount



Rolled Bench Without Back

Model Shown: BRE06-E-23-000
Available Sizes: 4ft and 6ft
Seat Material: Slatted Steel
Frame Material: 2 3/8" Galvanized Tubing with Powder Coat Finish
Options: Advantage, Industry Standard, and Textured Coatings
Portable, Inground Mount, or Surface Mount



Rolled Bench Without Back

Model Shown: BRE06-A-21-000
Available Sizes: 4ft and 6ft
Seat Material: 3/4" #9 Flattened Expanded Metal
Frame Material: 2 3/8" Galvanized Tubing with Powder Coat Finish
Options: Advantage, Industry Standard, and Textured Coatings
Portable, Inground Mount, or Surface Mount

Single Pedestal Bench With Back



Available Materials: Expanded Metal Punched Steel

Double Pedestal Bench With Back



Available Materials: Expanded Metal Punched Steel



Single Pedestal Bench With Back

Model Shown: BRT06-A-61-000
Available Sizes: 4ft, 6ft, and 8ft
Seat Material: 3/4" #9 Flattened Expanded Metal
Frame Material: 4" x 4" Square Galvanized Tubing, 2 3/8" Arms, with Powder Coat Finish
Options: • Advantage, Industry Standard, and Textured Coatings
• Inground Mount or Surface Mount



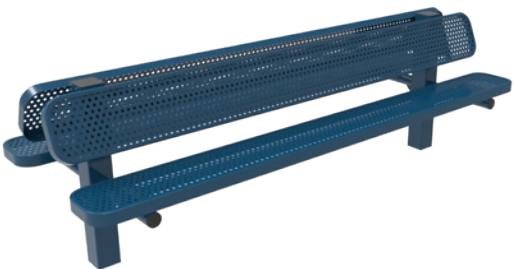
Double Pedestal Bench With Back

Model Shown: BRT06-A-62-002
Available Sizes: 4ft, 6ft, and 8ft
Seat Material: 3/4" #9 Flattened Expanded Metal
Frame Material: 4" x 4" Square Galvanized Tubing, 2 3/8" Arms, with Powder Coat Finish
Options: • Advantage, Industry Standard, and Textured Coatings
• Inground Mount or Surface Mount



Single Pedestal Bench With Back

Model Shown: BRT08-B-62-000
Available Sizes: 4ft, 6ft, and 8ft
Seat Material: 1/2" Hole Punched Steel
Frame Material: 4" x 4" Square Galvanized Tubing, 2 3/8" Arms, with Powder Coat Finish
Options: • Advantage, Industry Standard, and Textured Coatings
• Inground Mount or Surface Mount





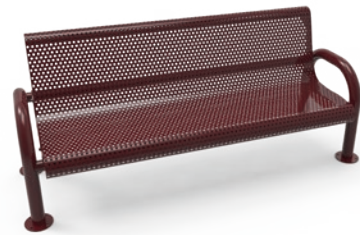
Double Pedestal Bench With Back

Model Shown: BRT08-B-61-002
Available Sizes: 4ft, 6ft, and 8ft
Seat Material: 1/2" Hole Punched Steel
Frame Material: 4" x 4" Square Galvanized Tubing, 2 3/8" Arms, with Powder Coat Finish
Options: • Advantage, Industry Standard, and Textured Coatings
• Inground Mount or Surface Mount

MOD Bench With Back



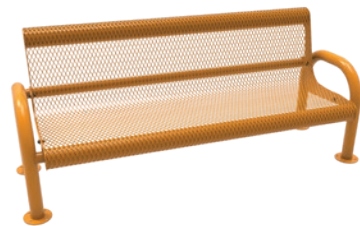
Available Materials:  Expanded Metal  Punched Steel  Slatted Steel



MOD Bench With Back

Model Shown: BMD06-B-54-000
Available Sizes: 4ft and 6ft
Seat Material: 1/2" Hole Punched Steel
Frame Material: 2 7/8" Galvanized Tubing with Powder Coat Finish
Options:

- Advantage, Industry Standard, and Textured Coatings
- Inground Mount or Surface Mount



MOD Bench With Back

Model Shown: BMD06-A-54-000
Available Sizes: 4ft and 6ft
Seat Material: 3/4" #9 Flattened Expanded Metal
Frame Material: 2 7/8" Galvanized Tubing with Powder Coat Finish
Options:

- Advantage, Industry Standard, and Textured Coatings
- Inground Mount or Surface Mount



MOD Bench With Back

Model Shown: BMD06-E-53-000
Available Sizes: 4ft and 6ft
Seat Material: Slatted Steel
Frame Material: 2 7/8" Galvanized Tubing with Powder Coat Finish
Options:

- Advantage, Industry Standard, and Textured Coatings
- Inground Mount or Surface Mount

MOD Bench Without Back



Available Materials:  Expanded Metal  Punched Steel  Slatted Steel



MOD Bench Without Back

Model Shown: BMD06-E-60-000
Available Sizes: 4ft and 6ft
Seat Material: Slatted Steel
Frame Material: 2 7/8" Galvanized Tubing with Powder Coat Finish
Options:

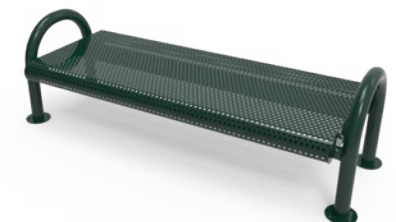
- Advantage, Industry Standard, and Textured Coatings
- Inground Mount or Surface Mount



MOD Bench Without Back

Model Shown: BMD06-A-59-000
Available Sizes: 4ft and 6ft
Seat Material: 3/4" #9 Flattened Expanded Metal
Material: 2 7/8" Galvanized Tubing with Powder Coat Finish
Options:

- Advantage, Industry Standard, and Textured Coatings
- Inground Mount or Surface Mount



MOD Bench Without Back

Model Shown: BMD06-B-60-000
Available Sizes: 4ft and 6ft
Seat Material: 1/2" Hole Punched Steel
Material: 2 7/8" Galvanized Tubing with Powder Coat Finish
Options:

- Advantage, Industry Standard, and Textured Coatings
- Inground Mount or Surface Mount

Contoured Bench With Back



Available Materials: Expanded Metal Punched Steel Slatted Steel



Contoured Bench With Back

Model Shown: BCA06-E-42-000
Available Sizes: 4ft and 6ft
Seat Material: Slatted Steel
Frame Material: 2 3/8" Galvanized Tubing with Powder Coat Finish
Options: Advantage, Industry Standard, and Textured Coatings
Inground Mount or Surface Mount



Contoured Bench With Back

Model Shown: BCA06-B-43-000
Available Sizes: 4ft and 6ft
Seat Material: 1/2" Hole Punched Steel
Frame Material: 2 3/8" Galvanized Tubing with Powder Coat Finish
Options: Advantage, Industry Standard, and Textured Coatings
Portable, Inground Mount, or Surface Mount



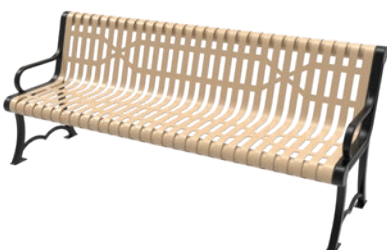
Contoured Bench With Back

Model Shown: BCA06-A-44-000
Available Sizes: 4ft and 6ft
Seat Material: 3/4" #9 Flattened Expanded Metal
Frame Material: 2 3/8" Galvanized Tubing with Powder Coat Finish
Options: Advantage, Industry Standard, and Textured Coatings
Portable, Inground Mount, or Surface Mount

Austin Bench



Available Materials: Expanded Metal Punched Steel Slatted Steel



Austin Bench

Model Shown: BAU06-E-64-000
Available Sizes: 4ft and 6ft
Seat Material: Slatted Steel
Frame Material: Cast Aluminum Austin Frame
Options: Advantage, Industry Standard, and Textured Coatings



Austin Bench

Model Shown: BAU06-B-64-000
Available Sizes: 4ft and 6ft
Seat Material: 1/2" Hole Punched Steel
Frame Material: Cast Aluminum Austin Frame
Options: Advantage, Industry Standard, and Textured Coatings



Austin Bench

Model Shown: BAU06-A-64-000
Available Sizes: 4ft and 6ft
Seat Material: 3/4" #9 Flattened Expanded Metal
Frame Material: Cast Aluminum Austin Frame
Options: Advantage, Industry Standard, and Textured Coatings

Downtown / Skyline / Village Benches



Skyline Bench | BSL06-N-57-000 | See page 47 for details

Downtown / Skyline / Village Benches



Downtown Bench with Back

Model Shown: BDT06-H-55-000
Available Sizes: 4ft and 6ft
Seat Material: 11 gauge Strap Metal
Frame Material: 3/8" Strap Metal
Options: Advantage, Industry Standard, and Textured Coatings



Downtown Bench without Back

Model Shown: BDT06-K-000
Available Sizes: 4ft and 6ft
Seat Material: 11 gauge Strap Metal
Frame Material: 3/8" Strap Metal
Options: Advantage, Industry Standard, and Textured Coatings



Skyline Bench

Model Shown: BSL06-N-57-000
Available Sizes: 4ft and 6ft
Seat Material: 11 gauge Strap Metal
Frame Material: 3/8" Strap Metal
Options: Advantage, Industry Standard, and Textured Coatings



Village Bench with Back

Model Shown: BVL06-Q-58-000
Available Sizes: 4ft and 6ft
Seat Material: 11 gauge Strap Metal
Frame Material: Decorative Cast Aluminum
Options: Advantage, Industry Standard, and Textured Coatings



Village Bench without Back

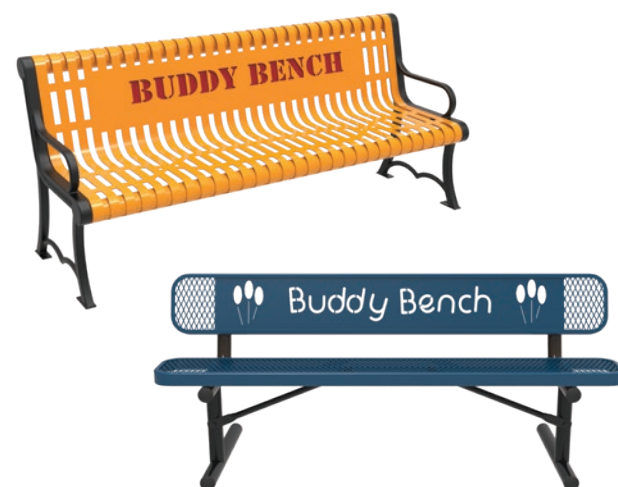
Model Shown: BVL06-T-58-000
Available Sizes: 4ft and 6ft
Seat Material: 11 gauge Strap Metal
Frame Material: Decorative Cast Aluminum
Options: Advantage, Industry Standard, and Textured Coatings

Custom



We understand that our products can serve a purpose beyond their basic function, and we are here to help meet every need that we can. For instance, we have actively taken part in the “Buddy Bench” Program, originally developed to help children be aware of those around them who might need a friend and to serve as an anti-bullying tool.

In conjunction with the customer, we regularly design company logos, school mascots, sports team logos, memorial plaques, and much more into our products. We specialize in working with our customers to understand their needs and translate them into a beautiful and meaningful display. There are endless possibilities, send us the artwork, and let us show you what we can do.



Custom



Games Tables



The game top is an easy and affordable way to add fun to your picnic tables. The game top can be added to any style table. It offers a 24" x 24" play surface with 3" squares. Chips not included.



Game Table

Model Shown: TRD46-B-04-000
Available Sizes: 46" Round Top
Top and Seat Material: 1/2" Hole Punched Steel
Frame Material: 2" Galvanized Tubing with Powder Coat Finish
Options: Advantage, Industry Standard, and Textured Coatings



Game Table

Model Shown: TSQ46-A-04-000
Available Sizes: 46" Square Top
Top and Seat Material: 3/4" #9 Flattened Expanded Metal
Frame Material: 2" Galvanized Tubing with Powder Coat Finish
Options: Advantage, Industry Standard, and Textured Coatings

Park Grill



Experience the joy of outdoor cooking with MyTCoat's park grill. Designed for durability and convenience, this mounted grill adds a touch of excitement to any outdoor space. Whether in public parks, campgrounds, or recreational areas, it's the perfect way to bring people together for memorable outdoor experiences.



Park Grill

Model Shown: GSQ24-S-46-000
Material: 11 gauge Steel with High Temp Powder Coat Finish
Options: Swivel Grill Box - 5/8" Grate Surface - Utility Shelf
Inground Mount or Surface Mount

Trash Receptables



Available Materials: Expanded Metal Punched Steel Slatted Steel



Trash Receptacle

Model Shown: RRD32-A-00-000
Available Sizes: 32 Gallon
Material: 3/4" #9 Flattened Expanded Metal
Options: Advantage, Industry Standard, and Textured Coatings

*Model Shown with Flattop, Liner, and Inground Mount. Sold Separately.



Trash Receptacle

Model Shown: RRD32-B-00-000
Available Sizes: 32 Gallon
Material: 1/2" Hole Punched Steel
Options: Advantage, Industry Standard, and Textured Coatings

*Model Shown with Steel Dome, Liner, and Surface Mount. Sold Separately.

Trash Receptables



Trash Receptacle

Model Shown: RRD32-E-00-000
Available Sizes: 32 Gallon
Material: Slatted Steel
Options: Advantage, Industry Standard, and Textured Coatings

*Model Shown with Steel Dome, Liner, and Surface Mount. Sold Separately.



Downtown Tapered Trash Receptacle

Model Shown: RDW32-I-01-000
Available Sizes: 32 Gallon
Material: Slatted Steel
Options: Advantage, Industry Standard, and Textured Coatings

Model Comes with Custom Flattop included in price.
*Model Shown Liner - Sold Separately.



Downtown Trash Receptacle with Side Opening

Model Shown: RDW32-I-02-000
Available Sizes: 32 Gallon
Material: Slatted Steel
Options: Advantage, Industry Standard, and Textured Coatings

Model Comes with Custom Flattop included in price.
*Model Shown Liner - Sold Separately.

Trash Receptables



Skyline Trash Receptacle

Model Shown: RSL32-H-00-000
Available Sizes: 32 Gallon
Seat Material: 11 gauge Strap Metal with Flare Top
Included: Ash Bonnet Top Lid and Rigid Plastic Liner
Options: Advantage, Industry Standard, and Textured Coatings

*Product Show with Inground Mount (Sold Separately)



Skyline Trash Receptacle with Side Opening

Model Shown: RSL32-H-02-000
Available Sizes: 32 Gallon with Side Opening
Seat Material: 11 gauge Strap Metal with Flare Top
Included: Flat Bonnet Top Lid and Rigid Plastic Liner
Options: Advantage, Industry Standard, and Textured Coatings



Flattop Lid - 12" Opening

Model Shown: RFT32-S-00-000
Available Sizes: 32 Gallon - 12" Opening
Material: Formed Steel
Options: Advantage, Industry Standard, and Textured Coatings



Steel Dome Lid

Model Shown: RDT32-S-00-000
Available Sizes: 32 Gallon
Material: Formed Steel
Options: Advantage, Industry Standard, and Textured Coatings

Trash Receptables Accessories



Plastic Liner

Model Shown: RLN32-P-00-000
Available Sizes: 32 Gallon
Material: Rigid Plastic
Options: Black Only



Ash Bonnet Top

Model Shown: RAT32-S-00-000
Available Sizes: 32 Gallon
Material: Formed Steel - Stainless Steel Ash Tray
Options: Advantage, Industry Standard, and Textured Coatings



Rain Bonnet Top

Model Shown: RBT32-S-00-000
Available Sizes: 32 Gallon
Material: Formed Steel
Options: Advantage, Industry Standard, and Textured Coatings



Trash Receptacle Inground Mount

Model Shown: RIM32-S-00-000
Available Sizes: 32 Gallon
Material: Steel
Options: Powder Coat Finish



Trash Receptacle Surface Mount

Model Shown: RSM32-S-00-000
Available Sizes: 32 Gallon
Material: Steel
Options: Powder Coat Finish

Ashurns



Available Materials: Expanded Metal Punched Steel Slatted Steel

Ashurns



Ashurns

Model Shown: URN01-A-00-000
Material: 3/4" #9 Flattened Expanded Metal - Stainless Steel Ash Tray
Options: Advantage, Industry Standard, and Textured Coatings



Ashurns

Model Shown: URN01-B-00-000
Material: 1/2" Hole Punched Steel - Stainless Steel Ash Tray
Options: Advantage, Industry Standard, and Textured Coatings



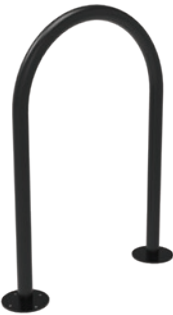
Ashurns

Model Shown: URN01-E-00-000
Material: Slatted Steel - Stainless Steel Ash Tray
Options: Advantage, Industry Standard, and Textured Coatings

Bike Racks



Bike Racks



Single Loop Bike Rack - 3 Bike

- Model Shown: BKW13-190-PC-SM
Material: 1.90 O.D. Galvanized Steel Tubing
Options:
 - Available in Powder Coat, Advantage, Industry Standard, and Textured Coatings
 - Inground or Surface Mount



Single Loop Bike Rack - 3 Bike

- Model Shown: BKW13-278-PC-SM
Material: 2 7/8" O.D. Galvanized Steel Tubing
Options:
 - Available in Powder Coat, Advantage, Industry Standard, and Textured Coatings
 - Inground or Surface Mount



Single Loop Bike Rack - 3 Bike

- Model Shown: BKW13-238-PC-SM
Material: 2 3/8" O.D. Galvanized Steel Tubing
Options:
 - Available in Powder Coat, Advantage, Industry Standard, and Textured Coatings
 - Inground or Surface Mount

Dog Park Kits



MyTCoat is very excited to offer our Dogs N Play dog park line of products. No matter what size dog park you are planning we offer plenty of components to meet every need. All platform surfaces are coated in our special Paw Protect coating that can be ordered to meet your design needs. You can order your components individually or in kits for convenience.



Dog Park Kits



Available Colors

*Standard Colors are Light Blue and Yellow, MyTCoat can offer a variety of colors at special request.

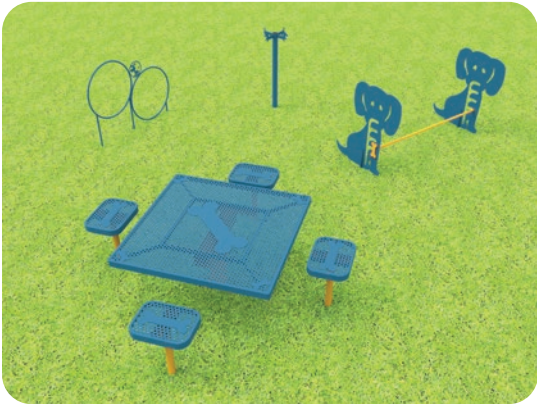
*Dog Crawl Colors are not available in Brown and colors may vary slightly from other products

			
Black	Brown	Green	Dark Blue
			
Light Blue	Red	Purple	Burgundy
			
Tan	Orange	Yellow	Gray

Notes about colors:

Colors may vary between different coatings.

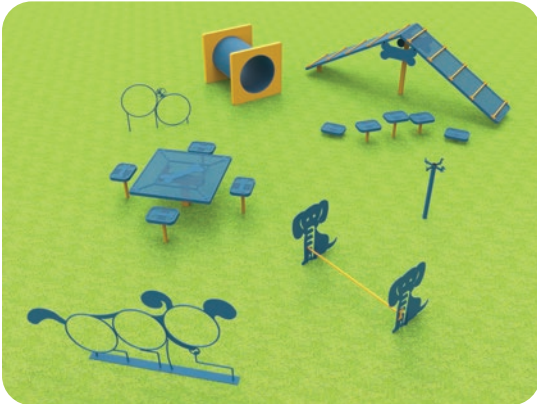
Dog Park Kits



- Small Dog Park Kit
- Square Table with 4 Accessory Arms
 - Dog Hurdle
 - Two Hoop Jump
 - Leash Post

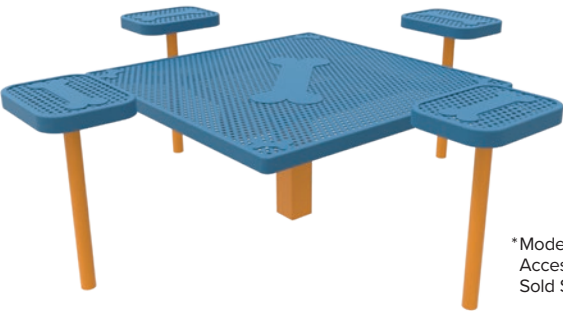


- Medium Dog Park Kit
- Square Table with 4 Accessory Arms
 - Dog Hurdle
 - Three Hoop Dog Shaped Jump
 - Stepping Bones
 - Dog Crawl
 - Leash Post

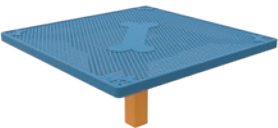


- Large Dog Park Kit
- Square Table with 4 Accessory Arms
 - Dog Hurdle
 - Two Hoop Jump
 - Three Hoop Dog Shaped Jump
 - Stepping Bones
 - Dog Crawl
 - Platform Climb
 - Leash Post

Dog Park Accessories



*Model Shown with
Accessory Pads.
Sold Separately.



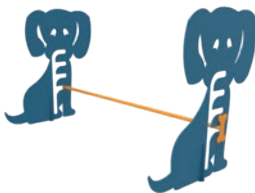
Square Dog Grooming Table

- Model Shown: DOG01-PP-00-000
Available Sizes: 46" Square Top with Paw Protect Coating
Top Material: 1/2" Hole Punched Steel
Frame Material: 4" x 4" Galvanized Tubing with Powder Coat Finish



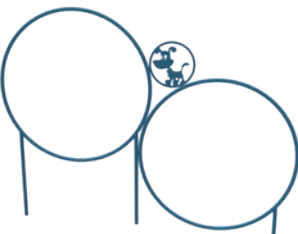
Dog Grooming Table Accessory Pad

- Model Shown: DOG02-PP-00-000
Available Sizes: 16" wide Pads with Paw Protect Coating
Top Material: 1/2" Hole Punched Steel
Frame Material: 3" x 3" Galvanized Tubing with Powder Coat Finish
Options: Sold as individual units



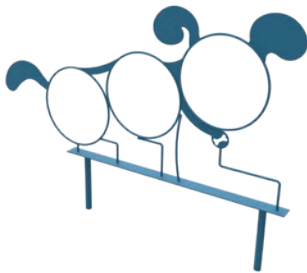
Dog Hurdle

- Model Shown: DOG03-S-00-000
Side Material: 11 gauge Steel with Industry Standard Coating
Hurdle Material: 1" Galvanized Tubing with Powder Coat Finish



Two Hoop Jump

- Model Shown: DOG04-S-00-000
Hoop Material: 5/8" Solid Steel with Industry Standard Coating
Cut-Out Material: 11 gauge Steel



Three Hoop Dog Jump

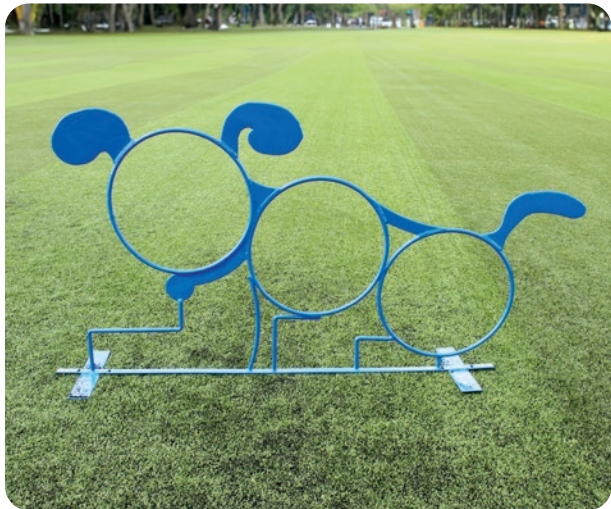
- Model Shown: DOG05-S-00-000
Hoop Material: 5/8" Solid Steel with Industry Standard Coating
Cut-Out Material: 11 gauge Steel



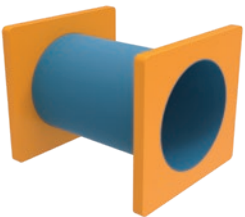
Stepping Pads

- Model Shown: DOG06-S-00-000
Available Sizes: 16" wide Pads with Paw Protect Coating
Top and Seat Material: 1/2" Hole Punched Steel
Frame Material: 3" x 3" Galvanized Tubing with Powder Coat Finish
Options: Sold as a set of 5

Dog Park Accessories

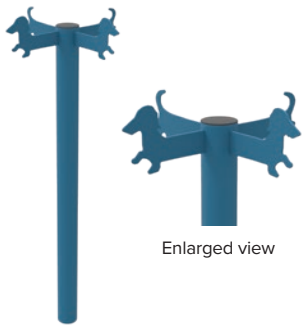


Dog Park Accessories



Dog Crawl Through

Model Shown: DOG07-P-00-000
Available Sizes: 30" Wide Tunnel
Material: High Density Molded Plastic



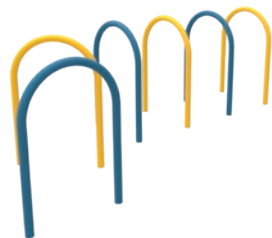
Leash Post

Model Shown: DOG08-S-00-000
Post Material: 2 3/8" Galvanized Steel Tubing with Industry Standard Coating
Cut-Out Material: 11 gauge Steel



Dog Climb

Model Shown: DOG09-PP-00-000
Available Sizes: 161" L x 55" H with Protect Coating
Top Material: 1/2" Hole Punched Steel
Frame Material: 3" x 3" Galvanized Tubing with Powder Coat Finish



Dog Run Through

Model Shown: DOG10-S-00-000
Material: 1.9 O.D. Galvanized Tubing with powder coat finish
Options: Sold as separate units



Dog Park Bench

Model Shown: DOG11-D-00-000
Available Sizes: 6ft
Seat Material: 1/2" Hole Punched Steel
Frame Material: 2 3/8" Galvanized Tubing with Powder Coat Finish
Options: • Industry Standard Coating
• Portable, Inground Mount, or Surface Mount



Dog Park Trash Receptacle

Model Shown: DOG12-D-00-000
Available Sizes: 32 Gallon
Material: 1/2" Hole Punched Steel
Options: • Includes Flattop and Liner
• Industry Standard Coating

Terms and Payment: Terms will be set up on a per customer basis based on criteria set by MyTCoat. For customers who do not meet the requirements, prepayment for full amount of Invoice will be required before product is produced. Invoices are considered a sales contract and payment is due upon terms. If payment goes beyond terms a “Late Fee” may be incurred no less than 1.5% and up to 5% of total invoice excluding Tax (when applicable). MyTCoat accepts Business Checks (Personnel Checks are only accepted after check has been deposited and cleared by customers financial institution), ACH payments, and all major Credit Cards. Credit Card payments are accepted via the internet with a small “service charge”.

Warranty: MyTCoat offers a 7-year limited warranty on all Advantage coated parts, 5-year limited warranty on Industry Standard coated parts, 7-year limited warranty on all Textured coated parts, and 1-year limited warranty on all Powder Coated parts. All other parts are warranted for one year to be free of workmanship or material defects. In order for warranty to apply, all products must be installed and maintained properly. If an item falls under warranty, we agree to repair or replace that item. Warranty does not cover vandalism, disasters (man-made or natural), naturally occurring weathering and wear-and-tear, and improper maintenance or installation. For a copy of warranty information, please contact customer service.

Cancellations: All Cancellations must be approved by MyTCoat prior to shipping any product back. Return Freight shall be arranged by customer and any incurred freight expense for a return shall be pre-paid by customer. Any orders that are canceled after product has been produced is subject to restocking fee. Custom Lettering, Logos, or Color will be approved by customer, after approval NO cancellation will be accepted.

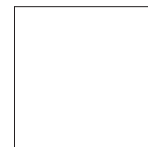
Freight Damage or Loss: All shipments must be inspected at the time of Delivery (no exceptions). Any visible damage must be noted on the delivery receipt and MyTCoat must be notified immediately. If the damage is concealed, the customer must notify MyTCoat within 5 days along with a detailed description of the damage and pictures. Replacements for any freight damage will be at the customer’s expense if any of the criteria above is not met. Customer assumes ownership of goods at the time the product is loaded onto transport.

Specifications: All Specifications are available through customer service. Any product that is sold as “Accessible” adheres to the Americans with Disability Act 2010 guideline. Specifications are subject to change at any time, please ask for the most current copy of product specification before purchase.

All products are shipped un-assembled, assembly instructions are available through customer service or our website.

MyTCoat
— Commercial Outdoor Furniture —





Distributed by:

Resort Contract Furnishings 888-848-9555

